

# 8671 - 8675 HAYDEN PLACE

COVER CITY, CA 90232



A DIVISION OF  
**LEE & ASSOCIATES**

**SOUND STAGE/STUDIO CONVERSION - 22' CEILING HEIGHT**

# WHOLE BUILDING AVAILABLE

## PREMISES

± 24,743 SF (Divisible)

## RENT

Contact Broker

## TERM

5+ Years

## PARKING

2/1000 (\$175/Space/Month)

## CONTACTS

**David Wilson**  
310.899.2707  
dwilson@leewestla.com  
AGT DRE 00822760

**James Wilson**  
310-899-2708  
jwilson@leewestla.com  
AGT DRE 00883324

**Dylan Mahood**  
310-899-2706  
dmahood@leewestla.com  
AGT DRE 02027002

# FEATURES

- High Exposed Ceilings
- Polished Concrete Floors
- Glass Roll Up Doors
- Skylights
- Offices Were Designed as Edit Bays
- Large Private Exterior Patio
- 22' Ceiling Height,
- 4 Ground Level Doors and 1 Dock High
- 3 Phase Power
- Located in the Hayden Tract with Easy Access to the 10 and 405 Freeways

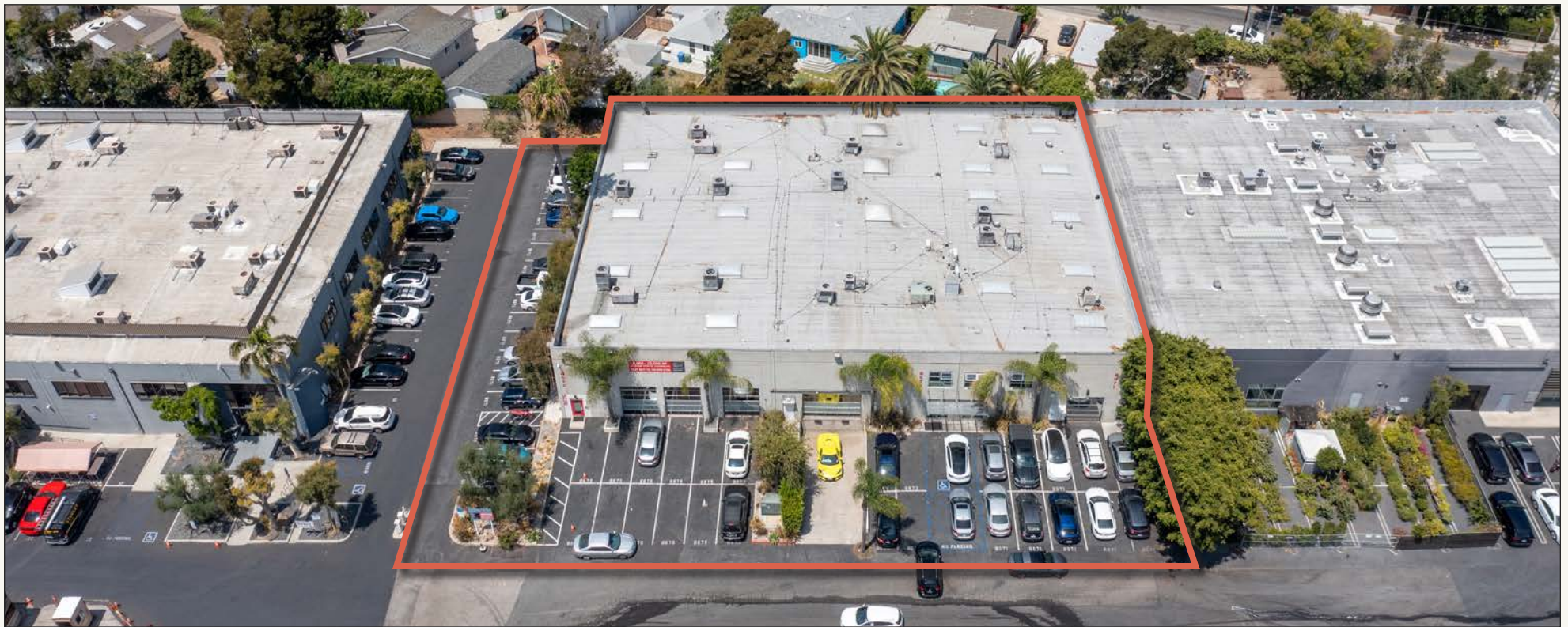


A DIVISION OF

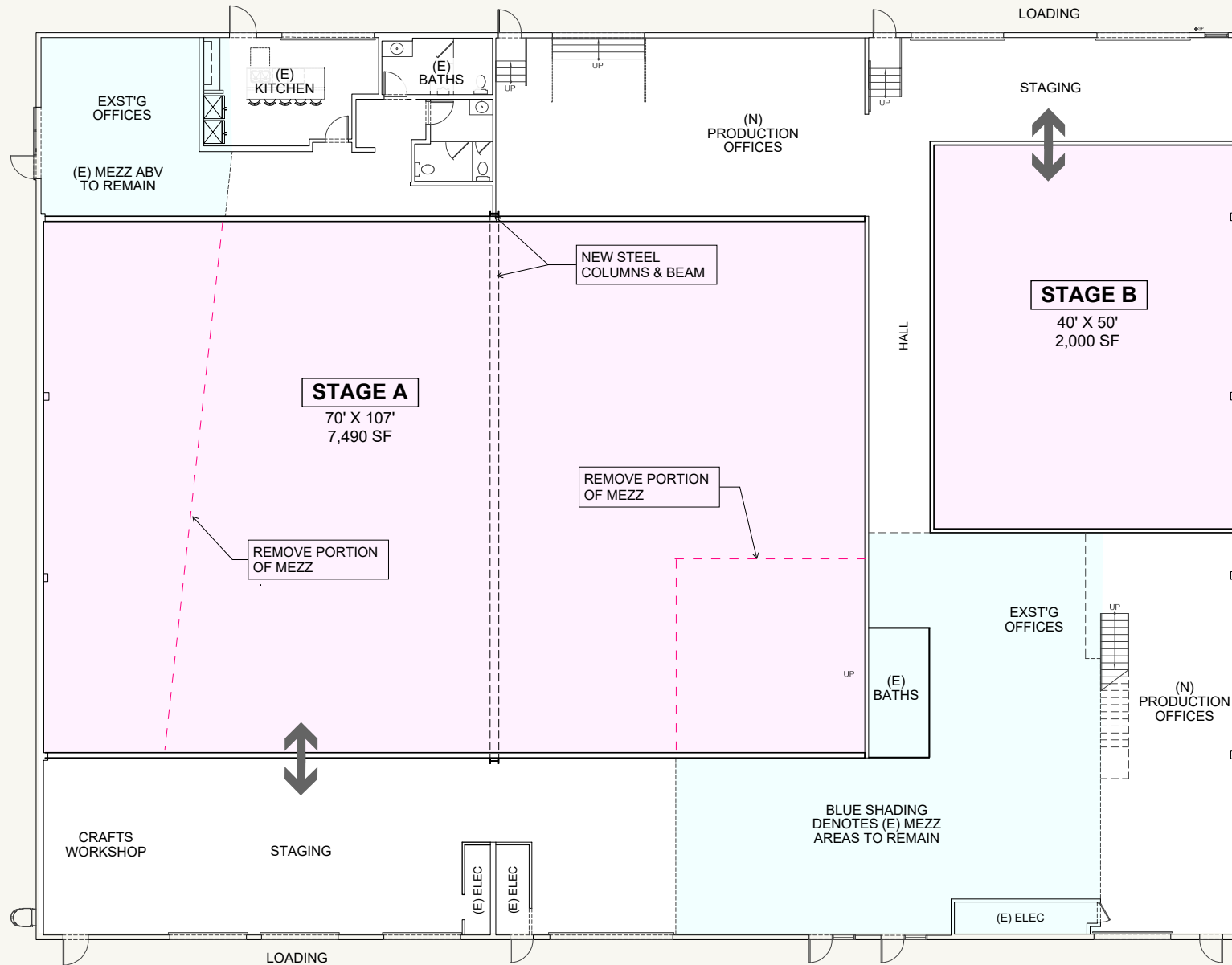
**LEE &  
ASSOCIATES**

No warranty or representation is made to the accuracy of the foregoing information. Terms of sale or lease are subject to change or withdrawal without notice.





# PRODUCTION STAGES CONCEPT PLAN

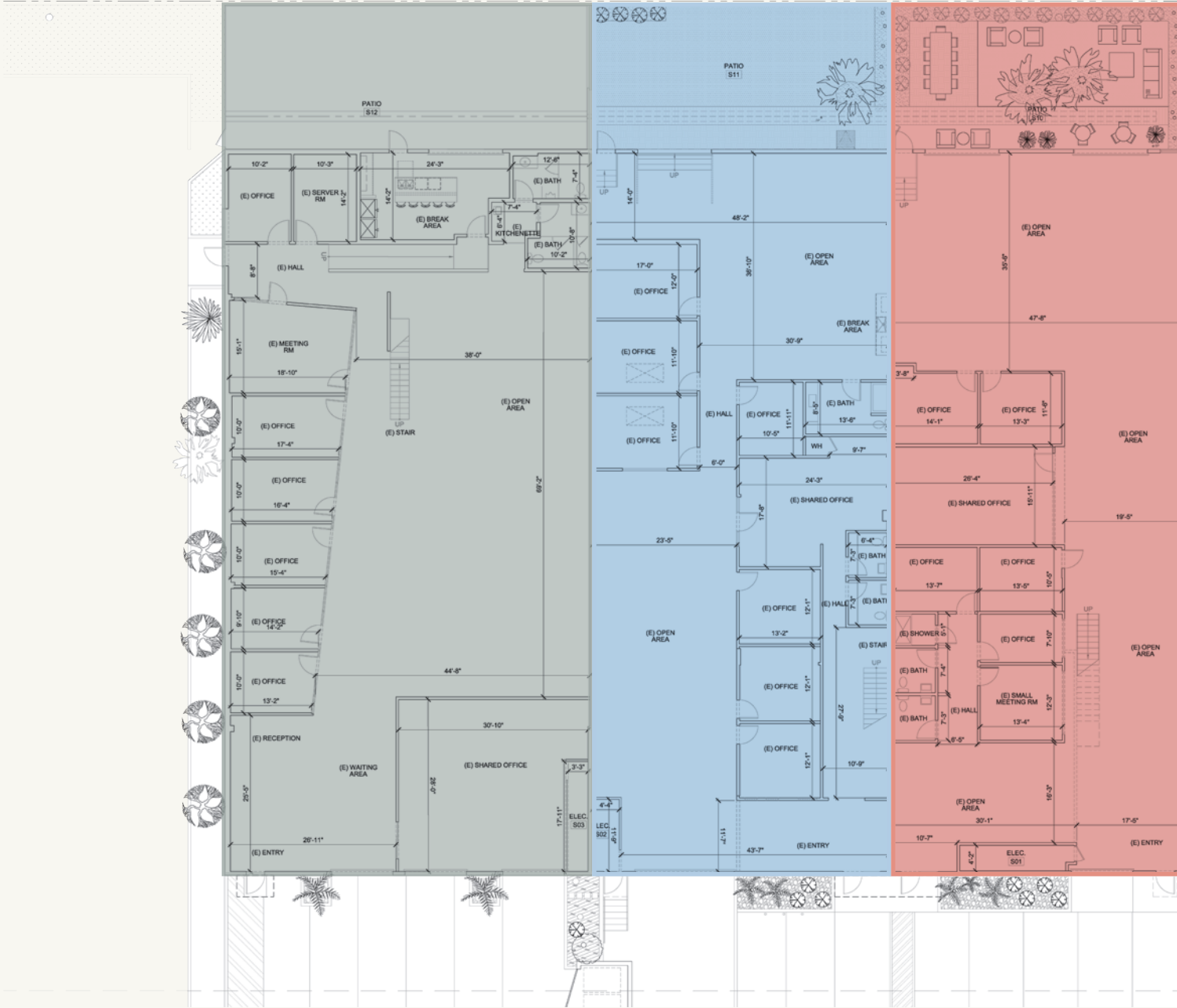


# AS IS PLANS

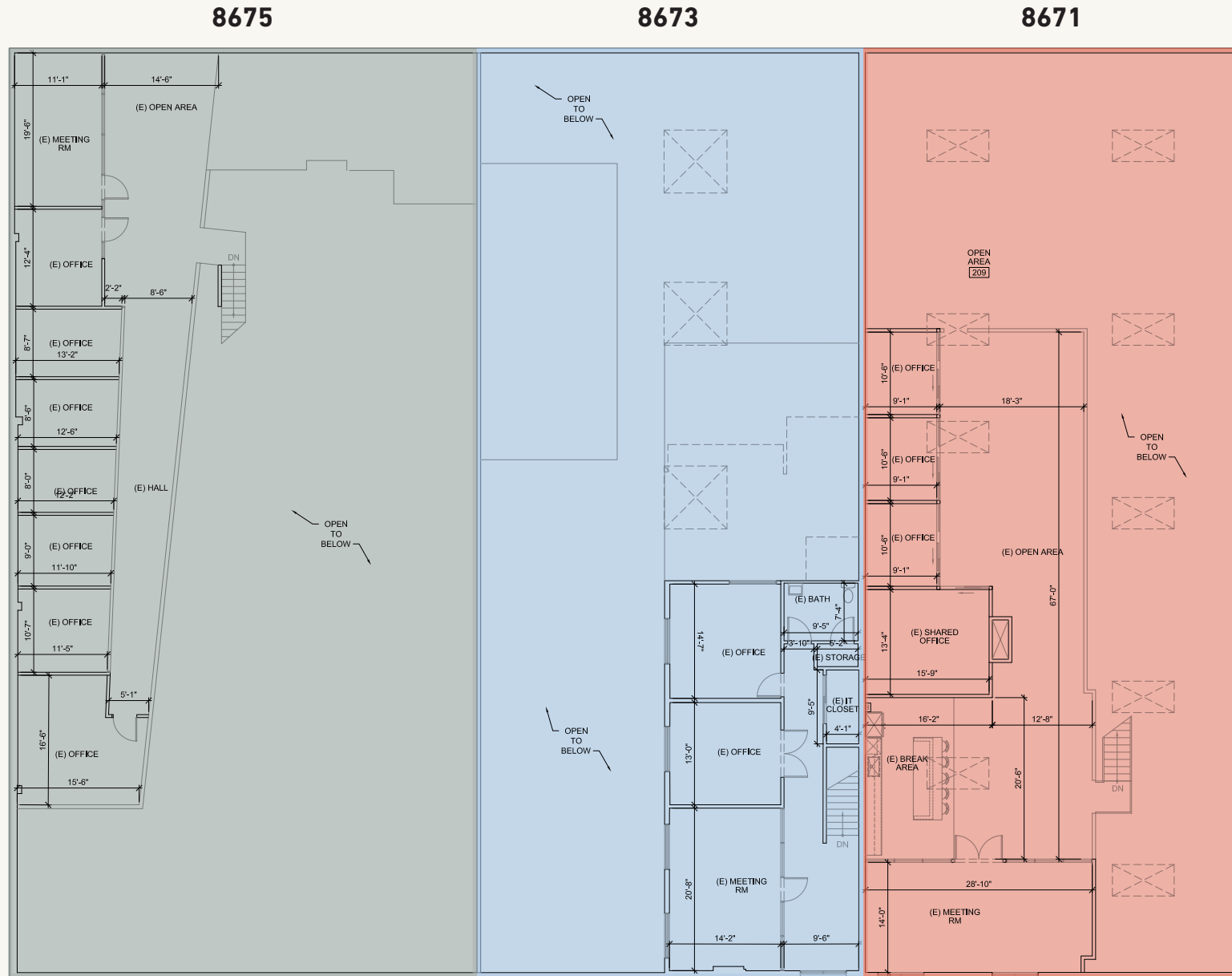
8675: 9,694 SF

8673: 7,028 SF

8671: 8,072 SF



# AS IS PLANS - MEZZANINE



# NOTABLE TENANTS IN THE AREA





# CONTACTS

**DAVID WILSON**

310.899.2707  
dwilson@leewestla.com  
AGT DRE 00822760

**JAMES WILSON**

310.899.2708  
jwilson@leewestla.com  
AGT DRE 00883324

**DYLAN MAHOOD**

310.899.2706  
dmahood@leewestla.com  
AGT DRE 02027002

Lee & Associates Los Angeles West, Inc.  
1508 17th Street, Santa Monica, CA 90404  
www.leewestla.com | DRE 01222000

